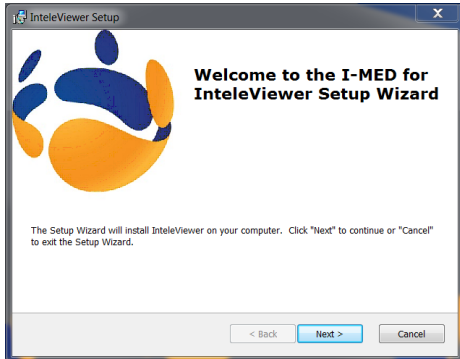


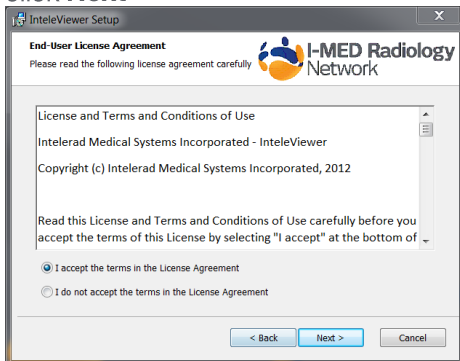


1. Download the appropriate Windows installer (32bit or 64bit) and **Run** the installer once the download is complete

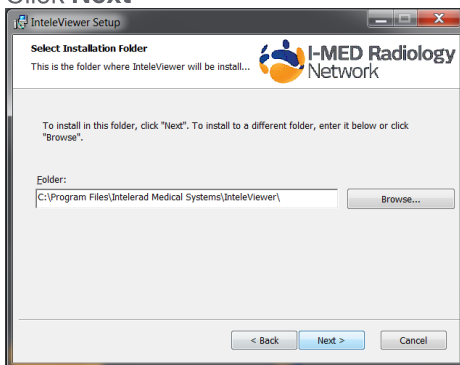
2. Click **Next**



3. Accept the Licence Agreement and click **Next**



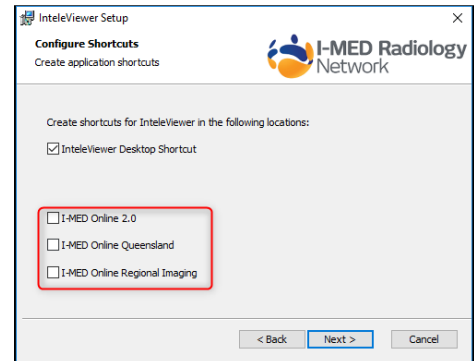
4. Click **Next**



5. IntelViewer 4-16-1-P234 application will install by default, and you can select the optional **I-MED Online desktop shortcut** to be added

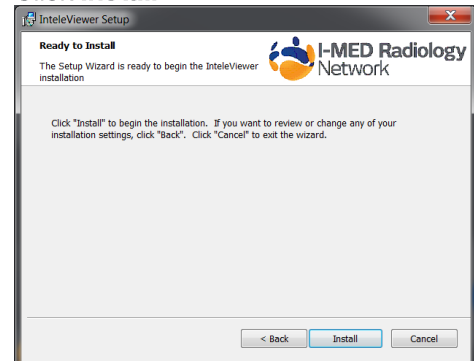
Select the appropriate checkbox for the relevant access; I-MED Online 2.0, I-MED Online QLD or I-MED Online Regional Imaging

If you are unsure which selection your login is associated with, please contact your local Customer Relationship Manager

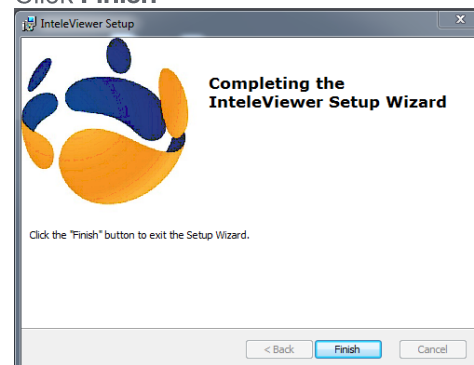


Click **Next** when you have made your selection

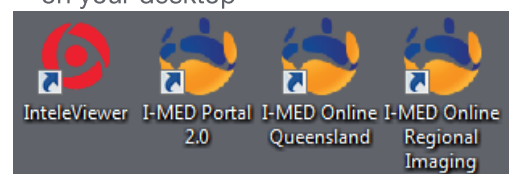
6. Click **Install**



7. Click **Finish**

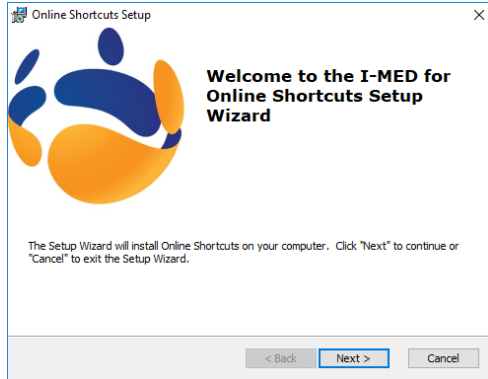


8. Depending on your I-MED Online Application install selection, the corresponding icons will now appear on your desktop



1. To install the I-MED Online desktop shortcut only (without IntelViewer), download and **Run** "Windows ION1.0 and ION2.0 Shortcuts"

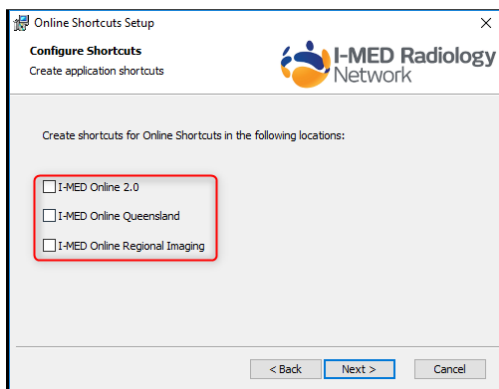
2. Click **Next**



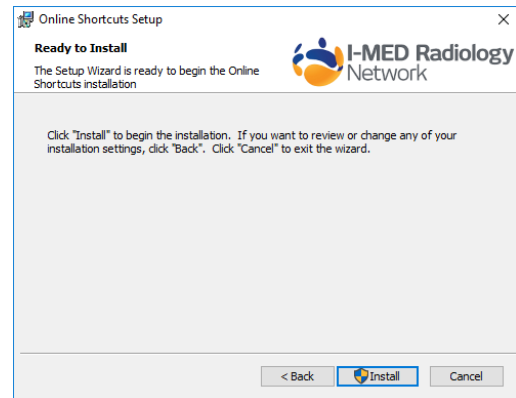
3. Select the appropriate checkbox for the relevant access; I-MED Online 2.0, I-MED Online QLD or I-MED Online Regional Imaging

If you are unsure which selection your login is associated with, please contact your local Customer Relationship Manager

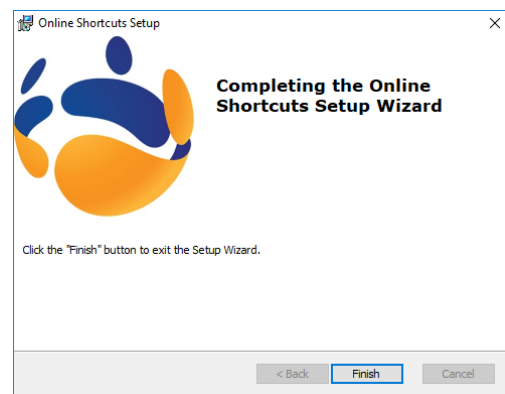
Click **Next** when you have made your selection



4. Click **Install**



5. Click **Finish**



6. Depending on your I-MED Online shortcut selection, the corresponding icon will now appear on your desktop

